



PBS KVIE

ABRIDGED

**PBS
KVIE**

FISCAL YEAR 2025 ANNUAL REPORT



INTRODUCTION

For more than 60 years, PBS KVIE has carried out our mission to inspire you to explore the world and connect with your community through the integrity of public media.

During Fiscal Year 2025, PBS KVIE continued to serve the community by bringing Northern California residents stories, news, and events that inform, inspire, and connect. From landmark premieres such as *Leonardo da Vinci*, *Great Migrations: A People on the Move*, and *Pati Jinich Explores Panamericana* to beloved favorites like *Miss Austen on Masterpiece* and *Walking with Dinosaurs*, FY25 reflected the depth and range of public media storytelling at its best.

We also offered community-centered events that brought our mission to life in fresh ways. Our Studio Series created new opportunities for audiences to engage more deeply with ideas and conversations, kicking off with travel expert Rick Steves and comedian Jack Gallagher and featuring guests such as chef Pati Jinich and Olympic Gold medalist Kristi Yamaguchi. Be My Neighbor Day welcomed families to the station for a joyful, hands-on celebration of learning, kindness, and community connection. Children explored fire trucks, wrote thank-you cards to first responders, met Daniel Tiger, and more. Our PBS KVIE Gallery and annual Art Auction continued to feature local artists, offering audiences the opportunity to purchase local art while supporting the station.

As federal funding was in jeopardy, KVIE chose to serve the community rather than retreat, advancing a new local news service. As we started the *PBS KVIE News Minute*, we underwent market research and development, culminating in the debut of *Abridged* on September 16, 2025. Rooted in Sacramento and serving El Dorado, Sacramento, Placer, and Yolo counties, *Abridged* is a nonprofit newsroom dedicated to empowering, informing, and connecting residents.

None of this is possible without our members. Their support makes the difference every day.



David Lowe

PBS KVIE President and General Manager

HIGHLIGHTS FROM FY25



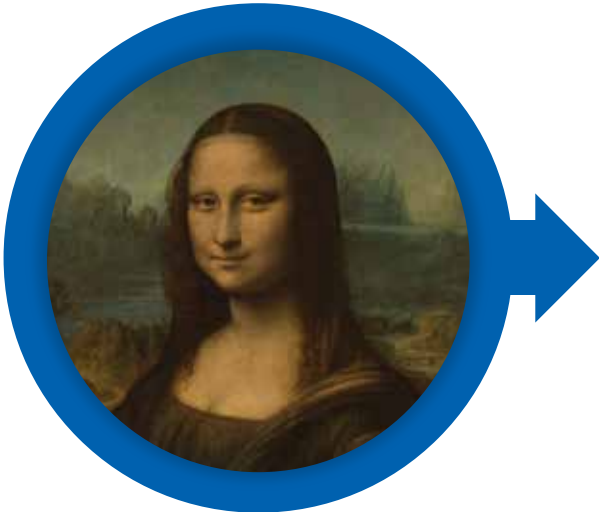
AUGUST 2024

America's Heartland
season 18 premieres



SEPTEMBER 2024

43rd annual Art Auction



NOVEMBER 2024

Leonardo da Vinci
& *Carl the Collector* premiere



DECEMBER 2024

All Creatures Great and Small
on *Masterpiece* screening parties

HIGHLIGHTS FROM FY25



JANUARY 2025

Studio Series launches with Rick Steves lecture & *Great Migrations: A People on the Move* premieres



APRIL 2025

First Be My Neighbor Day at PBS KVIE & *Miss Austen on Masterpiece* screening



MAY 2025

PBS KVIE News Minute launches, *Inside California Education* season 6 premieres, & Studio Series continues with comedian Jack Gallager



JUNE 2025

***Walking with Dinosaurs* premieres**

FEDERAL FUNDING UPDATE



In July 2025, just after FY25 concluded, Congress passed a rescission bill that eliminated previously approved funding for public media. The rescission was an extreme departure from decades of bipartisan commitment, and it ran counter to the tireless advocacy of millions of Americans who called and wrote to Congress in support of public media — including many in our own region.

This federal funding helped make trusted, educational, and commercial-free content possible, both across the nation and in our backyard. Without it, we entered uncharted territory.

But even in these uncertain times, our fundamental commitment remained the same: Viewers like you.

As we found new ways to serve our region, you showed up for us in a myriad of ways. Whether you made a donation, increased your monthly support as a member, found community at one of our events, or even left a kind comment on social media, your support meant the world to us. And it continues to mean the world to us.

This outcome in Congress was certainly not what we had hoped for, but every ending, inevitably, leads to a beginning. With you by our side, powering public media in our region, the future is ours to shape.

LOCAL PROGRAMMING

In FY25, PBS KVIE produced new programs and segments featuring a diverse array of stories from our region. These programs reflected the community back to itself, helping viewers understand their surroundings, make informed decisions, discover new destinations, and gain insight into the lives of others.



AMERICA'S HEARTLAND

Season 18 of *America's Heartland* premiered in August 2024 with 10 new episodes, highlighting small California farmers from a variety of backgrounds and farm-fresh recipes from chef Sharon Profis. The new season also marked the beginning of *Harvesting Health*, a nutrition segment hosted by Dr. Daphne Miller.



INSIDE CALIFORNIA EDUCATION

Season six of *Inside California Education* premiered in May 2025, exploring the ever-shifting opportunities and challenges shaping public education across California. Episodes covered topics like an innovative aviation program, AI and phone use in the classroom, African American studies, and a school district's response to the Palisades Fire.



KVIE ARTS SHOWCASE

Across five new episodes, *KVIE Arts Showcase* highlighted regional artists who are inspiring and uplifting their communities through self-expression. These episodes covered Mehri Yazdani's textured, history-rich paintings; Halifu Osumare's work as a dancer, scholar, and choreographer; Fei Fei Lin's deeply personal and captivating works of art; William Tran's mission to build community through storytelling; and Tee Sandifer's nonprofit, which helps young people express themselves through art.



PBS KVIE NEWS MINUTE

In May 2025, *PBS KVIE News Minute* launched with an overview of local stories from the Sacramento region, airing Monday to Friday before the 6PM *PBS News Hour* and before primetime programming starts at 8PM. Also available on YouTube, *News Minute* helps viewers stay informed about new policies, development projects, upcoming events, and more.

LOCAL PROGRAMMING



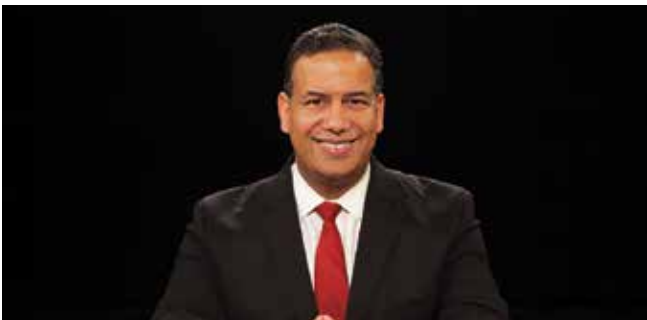
ROB ON THE ROAD

Rob on the Road continued to inspire viewers to explore our region, unearthing our rich local history by visiting the Sacramento Locomotive Works, the Tower Bridge, and the oldest Chinese restaurant in the United States, located in Woodland. Other episodes featured interviews with civil rights and farm labor movement leader Dolores Huerta and rugby champ and motivational speaker Robert Paylor.



SACRAMENTO MAYORAL CANDIDATES DEBATE 2024

In the lead-up to the 2024 election, Sacramento mayoral candidates Dr. Flojaune Cofer and Assemblymember Kevin McCarty joined moderators Marcos Bretón of *The Sacramento Bee* and Scott Syphax of *Studio Sacramento* for an hour-long debate in the Mary Stuart Rogers Foundation Studio.



STUDIO SACRAMENTO

Studio Sacramento tackled pressing issues shaping the Sacramento region, with host Scott Syphax leading policymakers, business leaders, and more through thought-provoking conversations each episode. Guests included Congressman Dr. Ami Bera, Sacramento County District Attorney Thien Ho, and Sanjay Varshney of Goldstone Wealth Management.



VIEWFINDER

We produced and acquired new episodes of *ViewFinder* that explored civil rights, history, nature, environmental challenges, and other key topics throughout our diverse region — including the story of a stroke survivor, the history of the UC Davis art department, and the importance of abalone to indigenous communities in California.

NATIONAL AND ACQUIRED PROGRAMMING

From critically acclaimed dramas to fascinating documentaries, national shows airing on PBS KVIE inspired everyone in our region to explore, try something new, and discover different perspectives. In addition to these national shows, we also purchased rights to additional dramas and documentaries to bring even more beloved programs to our region.



DRAMA

The return of beloved *Masterpiece* dramas like *All Creatures Great and Small*, *Miss Scarlet*, and *Wolf Hall* transported viewers back in time to the Yorkshire Dales, Victorian London, and the court of King Henry VIII, while *The First Lady* offered an intimate look at the lives of Michelle Obama, Betty Ford, and Eleanor Roosevelt. *Grantchester* on *Masterpiece* returned for another season of clerical sleuthing, paired with the premiere of *Patience* — a new English-language adaptation of the French detective series, *Astrid*. The cases continued with locally acquired programs like *The Madame Blanc Mysteries* and *Queens of Mystery*, and viewers traveled to a cottage hospital in India in *The Good Karma Hospital*. Jane Austen fans, too, had much to choose from this year; *Miss Austen on Masterpiece* told a tale of love, loss, and sisterhood inspired by the author's life, while *Pride & Prejudice*, *Persuasion*, and *Miss Austen Regrets* rounded out our slate of Austen programming to celebrate what would have been the author's 250th birthday.



SCIENCE & NATURE

There were endless discoveries for our viewers, stretching from prehistory to the present. Making a triumphant return to our screens, *Walking with Dinosaurs* unearthed the stories of six iconic dinosaurs and explored the latest findings in paleontology. In Botswana's wild Okavango Delta, *Big Cats 24/7* followed lions, leopards, and cheetahs both day and night; and at London's Natural History Museum, we met extraordinary creatures from the past in *Nature: Museum Alive with David Attenborough*. The *NOVA* series *Building Stuff* examined how engineers are transforming the world, and new episodes of *Secrets of the Dead* investigated ancient scrolls, vampire burials, Nazi art thieves, and more.

NATIONAL AND ACQUIRED PROGRAMMING



HISTORY & CURRENT EVENTS

Our deep dives into history continued with the premiere of *Leonardo da Vinci*, a new film from Ken Burns that profiled his first non-American subject; in two parts, we traced da Vinci's life and accomplishments as an artist and scientist. We also journeyed into the past with Dr. Henry Louis Gates, Jr.; in *Great Migrations: A People on the Move*, we discovered how waves of Black migration transformed American culture and society. *The Real Wild West* re-examined westward expansion from new perspectives, while *American Masters* and *American Experience* continued to highlight fascinating figures and rarely told stories from American history. And *Deadlock*, a new series moderated by UC Davis Law Professor Aaron Tang, led a panel of thought leaders through complex, ethical dilemmas based on real-life scenarios.



CULTURE

In *VOCES: American Historia – The Untold History of Latinos*, we joined host John Leguizamo on a journey through the rich and often overlooked history of Latinos — from ancient civilizations to modern-day achievements in the United States. Our travels continued in *Pati Jinich Explores Panamericana*, where we followed Pati along the Pan American highway from Alaska to Alberta. And in *Caregiving*, a film executive produced by Bradley Cooper, we turned our attention to the struggles and triumphs of caregivers around the country.

COMMUNITY EVENTS & ENGAGEMENT

We brought our community together in celebration of new programs, beautiful works of art, and remarkable individuals with ties to PBS. These events go beyond the screen, fostering connection among our viewers and highlighting the tangible impact of public media.



STUDIO SERIES

Launched in January 2025, the PBS KVIE Studio Series hosted public media celebrities and distinguished individuals in KVIE's Mary Stuart Rogers Foundation Studio. As part of the Studio Series, we welcomed travel expert Rick Steves for an evening lecture on January 27, 2025; Rick shared his best tips and tricks for European travel as well as stories from his own travels. Comedian Jack Gallagher then joined us for an evening of conversation on May 18, 2025, discussing his experience as a nationally recognized standup comic and his time working in film and television.



PREVIEW SCREENINGS

KVIE held multiple preview screenings in connection with new programs. The preview for *Leonardo da Vinci* by Ken Burns was held on November 4, 2024, at KVIE and featured a conversation with artist Julia Couzens and James Housefield, Ph.D., associate professor in the department of design at UC Davis. Screening parties were also held to celebrate the return of *All Creatures Great and Small on Masterpiece*. We held screenings at the Gallo Center for the Arts in Modesto on December 4, 2024, and at the Crest Theater in Sacramento on December 15, 2024. Guests at the screenings enjoyed trivia, a themed photo zone, and pictures of their pets on the big screen. Additionally, the preview screening for *Miss Austen on Masterpiece* was held on April 27, 2025, at the Crest Theater, featuring a themed photo zone, complimentary scones and cookies, and special guests dressed in Regency attire from the Jane Austen Society of North America – Greater Sacramento Region.

COMMUNITY EVENTS & ENGAGEMENT



PBS KVIE ART AUCTION

The 43rd annual Art Auction featured more than 270 artists throughout Northern California and served as the region's largest arts showcase for 23 hours of live and pre-recorded television and online streaming. From the collection's display at PBS KVIE to a celebration for artists and their peers, the Art Auction showcased our talented regional artists and underscored the passionate support of our community. All artwork is donated by participating artists, and 100 percent of the proceeds benefit the mission of PBS KVIE. In the 2024 event, artist Robert Simmons won the Best of Show award for his charcoal artwork, "Akina."



PBS KVIE GALLERY

The PBS KVIE Gallery showcases works from local and regional artists who have participated in the annual Art Auction. Exhibitors included Mya Louw, Naomi Bautista, Patricia Altschul, Patris, Polly LaPorte, Sandy Delehanty, Aniko Kiezel, and Steve Memering. Public reception events were held for artists, and each exhibition was also presented virtually on the gallery website.

CHILDREN'S PROGRAMMING & OUTREACH



Commercial-free programming from PBS KIDS allows children in our community to broaden their horizons and understand the world around them with friends like *Lyla in the Loop* and *Daniel Tiger's Neighborhood*, available at any time on our PBS KIDS channel and the PBS KIDS app.

The new series *Carl the Collector*, premiered on November 14, 2024. An animated series for kids ages 4-8, *Carl the Collector* follows the everyday adventures of Carl, a warm-hearted autistic raccoon who enjoys collecting things and loves his friends and family in Fuzzytown.

We were also thrilled to launch Be My Neighbor Day on April 5, 2025. Inspired by *Daniel Tiger's Neighborhood* and presented in partnership with Fred Rogers Productions, the day celebrated kindness and the importance of being a caring neighbor. Throughout the event, guests were able to complete hands-on crafts, participate in a community act of kindness, meet local first responders, and take a photo with Daniel Tiger himself!

FISCAL YEAR 2025 FINANCIAL REPORT

Through the generosity of more than 63,000 station supporters and local corporate sponsors, PBS KVIE ended the fiscal year with net income from operations of \$5,212,216, as reflected in the station’s audited financial statements. Factoring in investment income and interest, the station reported an increase in unrestricted net assets of \$8,191,942. Station management diligently monitors monthly results against budgets and trends and is mindful of how membership and other support dollars are applied to advance the PBS KVIE mission.

Individual contributors remain PBS KVIE’s primary source of funding. These memberships — \$35 donations, \$120 online gifts, \$250 contributions, and \$1,200 Masterpiece Circle gifts — when pooled together, easily eclipse PBS KVIE’s other revenue streams. Corporate sponsors, grants, and special events are important, too. But it’s the collective power of the individual that makes PBS KVIE possible.

PBS KVIE FISCAL YEAR 2025

REVENUES			EXPENDITURES		
	\$20,811,801			\$15,599,585	
Membership Contributions	9,165,709	44%	Programming & Production	6,925,482	45%
Grant Funding	5,432,922	26%	Fundraising & Membership	3,292,016	21%
CPB – Annual Grant	2,455,109	12%	Management & General	2,962,264	19%
Other Revenue	2,052,927	10%	Broadcasting	1,438,019	9%
Sponsorships	749,401	3%	Program Info & Promotion	981,804	6%
Rental Income	406,892	2%			
Production	312,860	2%			
Special Events	235,981	1%			

STATION LEADERSHIP

BOARD OF DIRECTORS*

Roy E. Brewer

Brewer Lofgren LLP

Nancy Brodovsky

SacConnects

Vanessa Caigoy

California Charter Schools Association
Sacramento County Office of Education

Bradley Carroll

Downey Brand LLP

Alex Castro

11:59

Cassandra Ferrannini

Downey Brand LLP

Pramila Kriplani

Global Investments

Greg Larsen

Larsen Public Affairs, LLC

Debbie Manning

California State Senate (ret)

Lynn Matsuda

Consultant – Lifestyle Concierge

LeShelle May

CNN

Paul McClure

Runyon Saltzman, Inc. (RSE) (ret)

Ken Menges

E&J Gallo Winery

Beth Miller

Miller Public Affairs Group

Dr. Nkiruka Catherine Ohaegbu

Adaptive Strategies Consulting

Brandon Pace

Kaiser Permanente – Northern California

Dr. Praveen Prasad

Dignity Health

Josh Pulliam

JPM+M, Inc.

Sue Scotland

Community Volunteer

Cyril Shah

Shah Wealth Management

Janine Southwick

SAFE Credit Union

Colleen Spitz

Bicker, Castillo, Fairbanks & Spitz Public Affairs

Joyce Terhaar

Writer and Retired Journalist

Dana Topousis

University of California, Davis

R. Brooks Whitehead

Murphy Austin Adams Schoenfeld LLP

*This list represents directors who served during some or all of FY25.

STATION MANAGEMENT



David Lowe

President & General Manager



Rose Froling

Human Resources Executive



Ryan Lillis

Associate General Manager – News



Staci Orlando-Waters

Associate General Manager – Operations/
Chief Financial Officer



Michael Sanford

Associate General Manager –
Production, Emeritus



Colleen Schulman

Associate General Manager –
Philanthropy