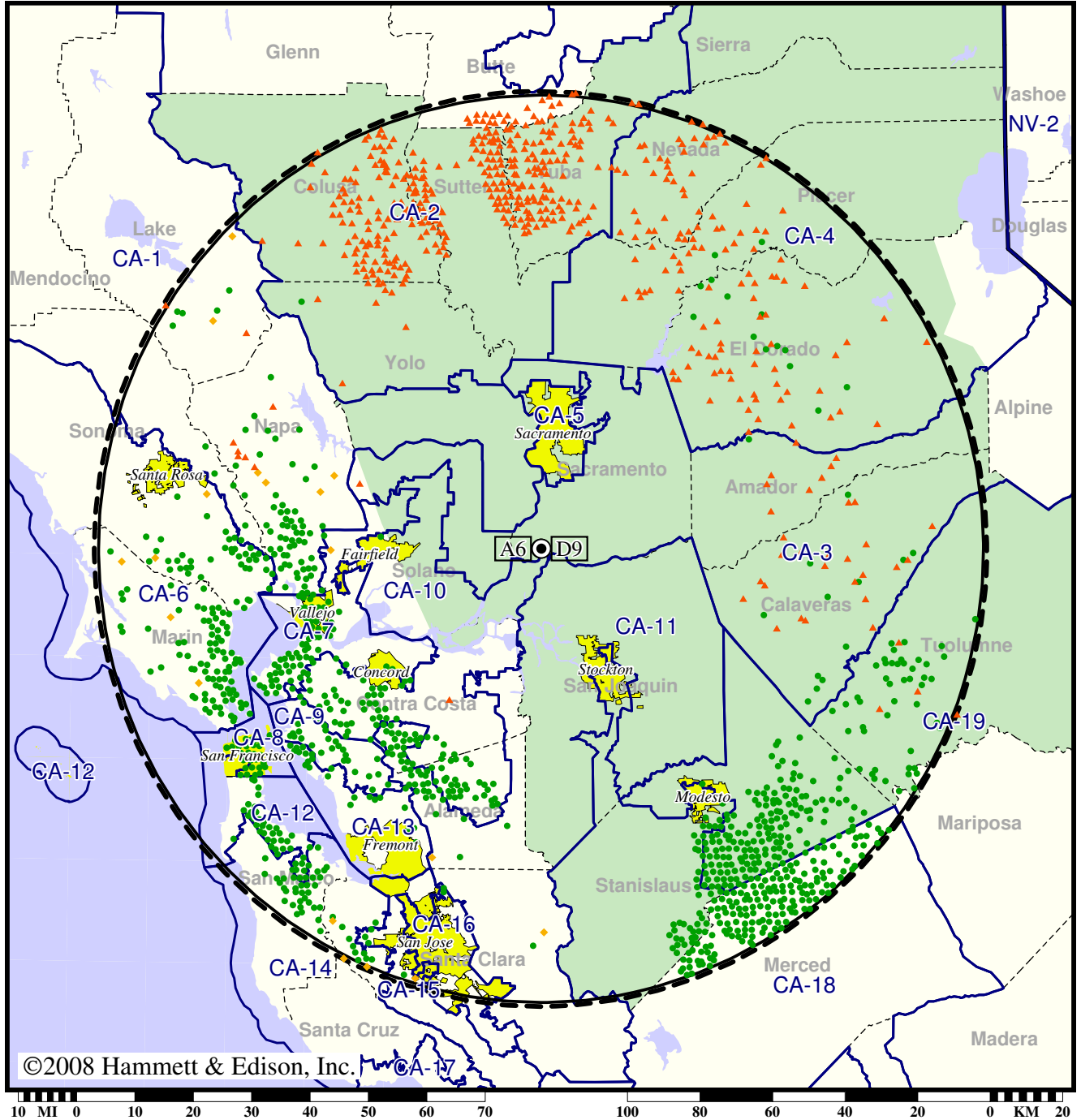


TV Station KVIE • Analog Channel 6, DTV Channel 9 • Sacramento, CA

Expected Change In Coverage: Granted Construction Permit

CP (solid): 33.0 kW ERP at 597 m HAAT, Network: PBS
vs. Analog (dashed): 100 kW ERP at 550 m HAAT, Network: PBS

Market: Sacramento-Stockton-Modesto, CA



©2008 Hammett & Edison, Inc.

- Coverage gained after DTV transition
- (no symbol) No change in coverage
- ◆ Coverage lost but still served by same network
- ▲ Coverage lost and no other service by same network